



Andy Beshear  
GOVERNOR

## TRANSPORTATION CABINET

200 Mero Street  
Frankfort, Kentucky 40601

Jim Gray  
SECRETARY

August 21, 2023

CALL NO. 107  
CONTRACT ID NO. 235318  
ADDENDUM # 2

Subject: Crittenden County, STP BRZ 9030 (424)  
Letting August 24, 2023

- (1) Revised - Proposal Bid Items - Page 120 of 120
- (2) Revised - Plan Sheet R4

Proposal revisions are available at <http://transportation.ky.gov/Construction-Procurement/>.

If you have any questions, please contact us at 502-564-3500.

Sincerely,

Rachel Mills,

A handwritten signature in black ink that reads "Rachel Mills".

Rachel Mills, P.E.  
Director  
Division of Construction Procurement

RM:mr  
Enclosures

**PROPOSAL BID ITEMS**

235318

Page 1 of 1

Report Date 8/21/23

**Section: 0001 - BRIDGE - 028B00010N**

LINE	BID CODE	ALT	DESCRIPTION	QUANTITY	UNIT	UNIT PRIC	FP	AMOUNT
0010	00003		CRUSHED STONE BASE	234.00	TON		\$	
0020	00100		ASPHALT SEAL AGGREGATE	5.00	TON		\$	
0030	00103		ASPHALT SEAL COAT	1.00	TON		\$	
0040	00212		CL2 ASPH BASE 1.00D PG64-22	237.00	TON		\$	
0050	00301		CL2 ASPH SURF 0.38D PG64-22	56.00	TON		\$	
0060	00356		ASPHALT MATERIAL FOR TACK	1.00	TON		\$	
0070	01987		DELINEATOR FOR GUARDRAIL BI DIRECTIONAL WHITE	8.00	EACH		\$	
0080	02200		ROADWAY EXCAVATION	265.00	CUYD		\$	
0090	02351		GUARDRAIL-STEEL W BEAM-S FACE	250.00	LF		\$	
0100	02367		GUARDRAIL END TREATMENT TYPE 1	2.00	EACH		\$	
0110	02381		REMOVE GUARDRAIL	290.00	LF		\$	
0120	02429		RIGHT-OF-WAY MONUMENT TYPE 1	3.00	EACH		\$	
0130	02432		WITNESS POST	3.00	EACH		\$	
0140	02545		CLEARING AND GRUBBING APPROX LESS THAN 1 ACRE	1.00	LS		\$	
0150	02585		EDGE KEY	44.00	LF		\$	
0160	02650		MAINTAIN & CONTROL TRAFFIC	1.00	LS		\$	
0170	02671		PORTABLE CHANGEABLE MESSAGE SIGN	2.00	EACH		\$	
0180	02676		MOBILIZATION FOR MILL & TEXT	1.00	LS		\$	
0190	02677		ASPHALT PAVE MILLING & TEXTURING	25.00	TON		\$	
0200	02726		STAKING	1.00	LS		\$	
0210	02731		REMOVE STRUCTURE	1.00	LS		\$	
0220	03299		ARMORED EDGE FOR CONCRETE	56.00	LF		\$	
0230	06514		PAVE STRIPING-PERM PAINT-4 IN	760.00	LF		\$	
0240	08003		FOUNDATION PREPARATION	1.00	LS		\$	
0250	08019		CYCLOPEAN STONE RIP RAP	902.00	TON		\$	
0260	08033		TEST PILES	170.00	LF		\$	
0270	08046		PILES-STEEL HP12X53 (REVISED 8-21-2023)	643.00	LF		\$	
0280	08094		PILE POINTS-12 IN (REVISED 8-21-2023)	10.00	EACH		\$	
0290	08100		CONCRETE-CLASS A	44.00	CUYD		\$	
0300	08104		CONCRETE-CLASS AA	46.00	CUYD		\$	
0310	08151		STEEL REINFORCEMENT-EPOXY COATED	9,434.00	LB		\$	
0320	08665		PRECAST PC BOX BEAM CB33-48	574.00	LF		\$	
0330	20191ED		OBJECT MARKER TY 3	2.00	EACH		\$	
0340	21415ND		EROSION CONTROL	1.00	LS		\$	
0350	23378EC		CONCRETE SEALING	3,409.00	SQFT		\$	
0360	25017ED		RAIL SYSTEM SIDE MOUNTED MGS	150.00	LF		\$	

**Section: 0002 - DEMOBILIZATION &/OR MOBILIZATION**

LINE	BID CODE	ALT	DESCRIPTION	QUANTITY	UNIT	UNIT PRIC	FP	AMOUNT
0370	02569		DEMOBILIZATION	1.00	LS		\$	

**GUARDRAIL**  
 LT. STA. 108+69.52 CONSTRUCT 50 LF GUARDRAIL - STEEL W BEAM - S FACE WITH 3-GUARDRAIL END TREATMENT TYPE 1. CONNECT TO BRIDGE RAILING SYSTEM.  
 RT. STA. 110+53.89 CONSTRUCT 75 LF GUARDRAIL - STEEL W BEAM - S FACE WITH 3-GUARDRAIL END TREATMENT TYPE 1. CONNECT TO BRIDGE RAIL SYSTEM.  
 RT. STA. 110+53.89 CONSTRUCT 75 LF GUARDRAIL - STEEL W BEAM - S FACE. CONNECT TO BRIDGE RAILING SYSTEM. CONNECT TO EXISTING GUARDRAIL.

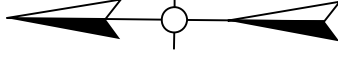
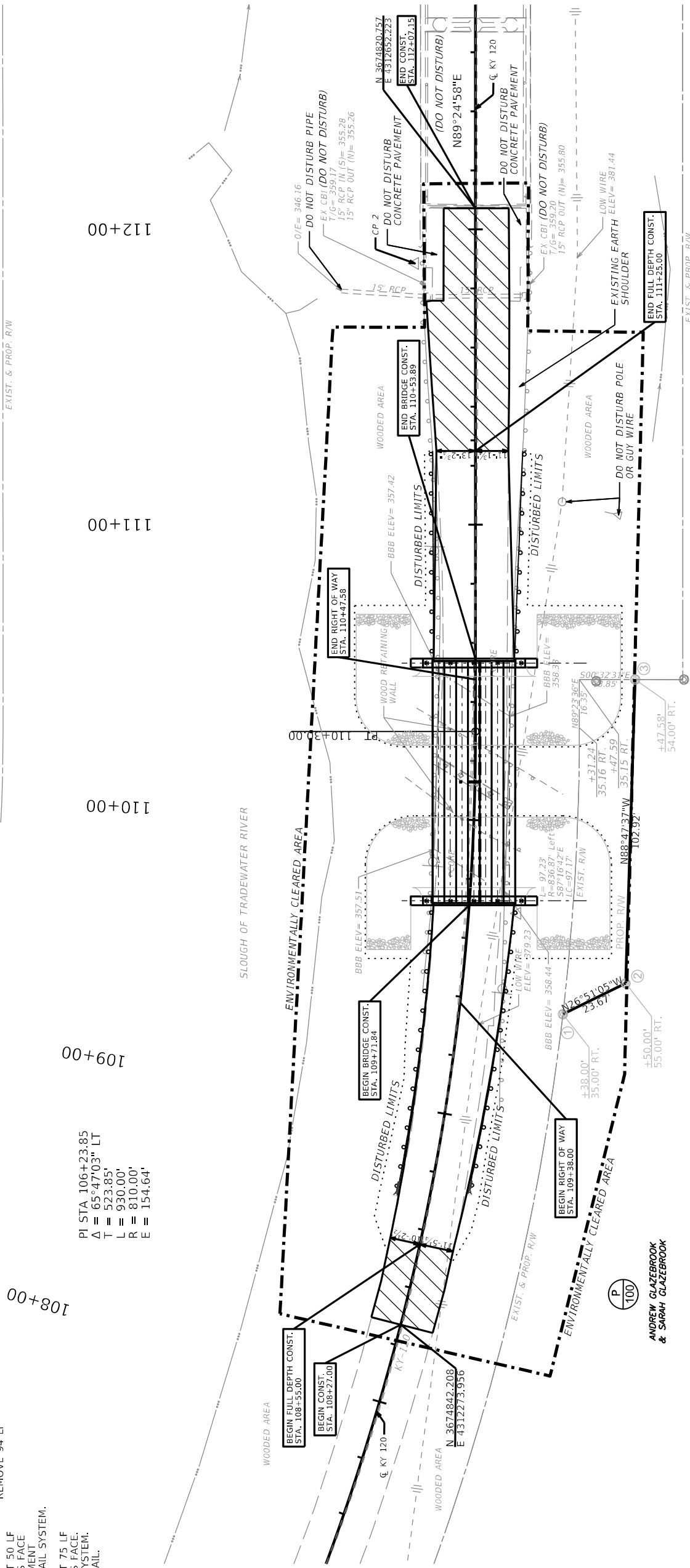
**REMOVE GUARDRAIL**  
 LT. STA. 109+40.94 TO LT. STA. 109+89.42, REMOVE 48 LF  
 LT. STA. 110+49.79 TO LT. STA. 111+28.89, REMOVE 80 LF  
 RT. STA. 109+04.23 TO RT. STA. 109+76.60, REMOVE 70 LF  
 RT. STA. 110+35.06 TO RT. STA. 111+28.83, REMOVE 94 LF

**REMOVE STRUCTURE**  
 STA. 110+12.88 - REMOVE 1 BRIDGE

**CONSTRUCT 80'-6" PPC BOX BEAM BRIDGE**  
 STA. 108+27.00 - CONSTRUCT 22 LF.  
 STA. 112+07.15 - CONSTRUCT 22 LF.

**EDGE KEY**  
 ASPHALT PAVE MILLING & OVERLAY

PI STA 106+23.85  
 $\Delta = 65^\circ 47' 03''$  LT  
 $T = 523.85'$   
 $L = 930.00'$   
 $R = 810.00'$   
 $E = 154.64'$



**COORDINATE CONTROL POINTS**

POINT	DESCRIPTION	State Plane Coordinates		STATION	OFFSET
		NORTH (Y)	EAST (X)		
CP 1	5/8" Rebar & Cap	3674845.8440	4312909.4300	362.02	-
CP 2	5/8" Rebar & Cap	3674841.0450	4312633.3070	358.98	111+88.44
CP 4	5/8" Rebar & Cap	3674913.3400	4312118.9700	359.17	-

**BASIS OF ELEVATIONS**

Source KYTC, USGS The National Map; National Boundaries Dataset, 3DEP Elevation Program, Geographic Names Information System, National Hydrography Dataset, National Land Cover Database, National Structures Dataset, and National Transportation Dataset; USGS Global Ecosystems; U.S. Census Bureau TIGER/Line data; USFS Road Data; Natural Earth Data; U.S. Department of State Humanitarian Information Unit; and NOAA National Centers for Environmental Information, U.S. Coastal Relief Model. Data refreshed June, 2022.

**COORDINATE SYSTEM**

Coordinates for horizontal control were obtained by redundant GPS observations using Spectra SP80 GNSS receivers on the NAD83 Kentucky State Plane Coordinate System, KY Single Zone, US Survey Feet utilizing the KYCORS RTN GPS Network on December 10, 2019. Coordinates shown are State Plane Coordinates, US Survey Feet. No project datum factor was calculated or used for this project.

**RIGHT OF WAY SUMMARY**

PARCEL NO.	OWNER(S)	TOTAL AREA OF TRACT		PERMANENT RW ACQUIRED		EASEMENTS REMAINING		SOURCE OF TITLE
		ACRES	SQ. FT.	ACRES	SQ. FT.	ACRES	SQ. FT.	
100	ANDREW GLAZEBROOK & SARAH GLAZEBROOK	78.750	-	-	2005.625	78.704	-	DB 245 PG 259

**CENTERLINE DATA**

POINT	State Plane Coordinates		STATION
	NORTH (Y)	EAST (X)	
POB	3675379.9333	4311689.5863	100+00.00
PC	3675289.1554	4311731.5313	101+00.00
PI	3674813.6134	4311951.2612	106+23.85
PT	3674818.9520	4312475.0866	110+30.00
END	3674823.2322	4312895.0648	114+50.00

**RIGHT OF WAY MONUMENTS**

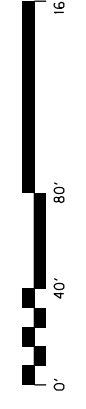
POINT	DESCRIPTION	State Plane Coordinates		STATION	OFFSET
		NORTH (Y)	EAST (X)		
1	R/W Monument Type 1	3674788.4218	4312379.6236	109+38.00	35.00 RT.
2	R/W Monument Type 1	3674767.3008	4312390.3153	109+50.00	55.00 RT.
3	R/W Monument Type 1	3674765.1339	4312493.2156	110+47.58	54.00 RT.



COMMONWEALTH OF KENTUCKY  
 DEPARTMENT OF HIGHWAYS

DRAWING TITLE: KY 120 OVER SLOUGH OF TRADEWATER RIVER

HORIZONTAL SCALE: 1" = 20'



STA 108+27.00 TO 112+07.15

ITEM NO. 01-10108.00  
 COUNTY OF CRITTENDEN  
 SHEET NO. R4

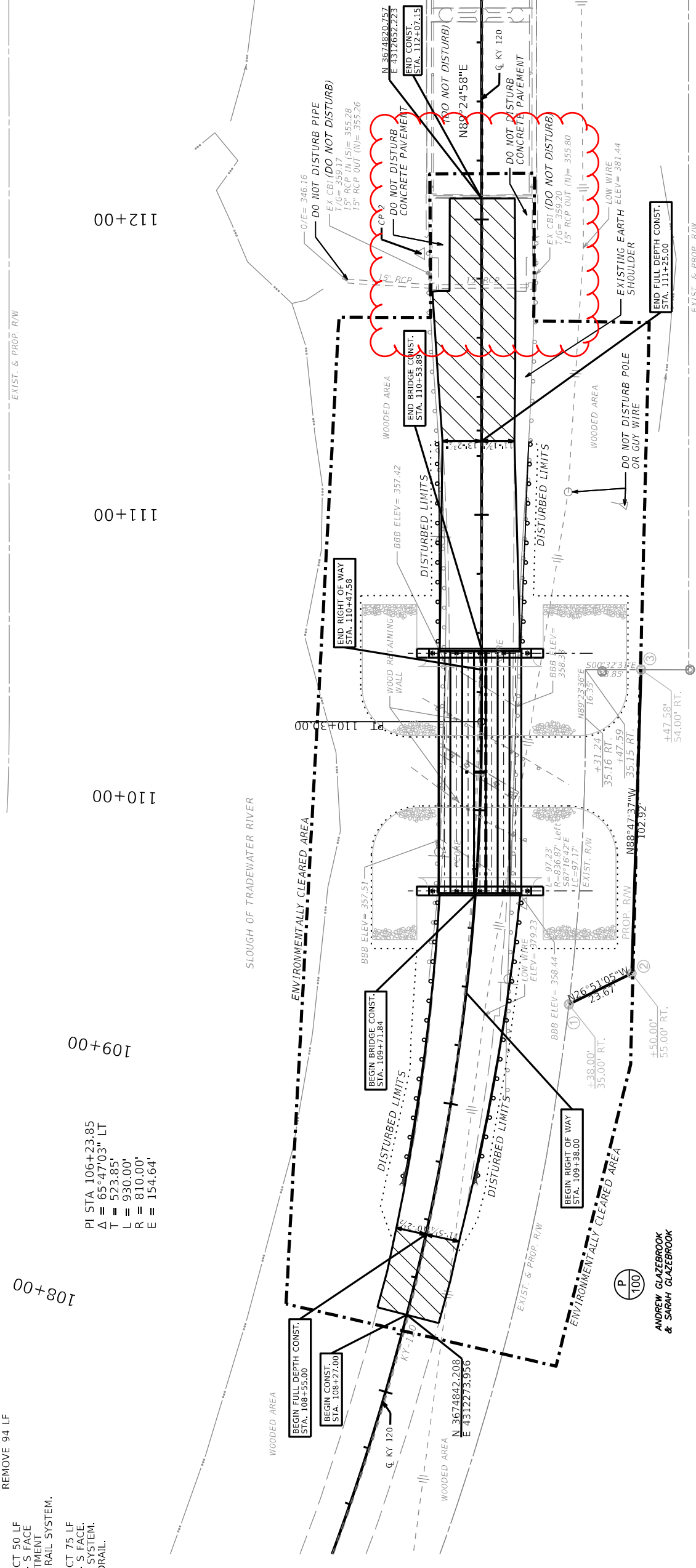
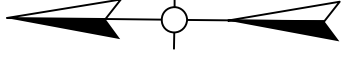
**EDGE KEY**  
 STA. 108+27.00 - CONSTRUCT 22 LF.  
 STA. 112+07.15 - CONSTRUCT 22 LF.

**REMOVE STRUCTURE**  
 STA. 110+12.88 - REMOVE 1 BRIDGE  
 STA. 110+49.79 TO LT. STA. 111+28.89, REMOVE 80 LF  
 STA. 109+40.94 TO LT. STA. 109+89.42, REMOVE 48 LF

**REMOVE GUARDRAIL**  
 LT. STA. 109+40.94 TO LT. STA. 109+89.42, REMOVE 48 LF  
 RT. STA. 109+04.23 TO RT. STA. 109+76.60, REMOVE 70 LF  
 RT. STA. 110+35.06 TO RT. STA. 111+28.83, REMOVE 94 LF

**GUARDRAIL**  
 LT. STA. 108+69.52 CONSTRUCT 50 LF GUARDRAIL - STEEL W BEAM - S FACE WITH 1-GUARDRAIL END TREATMENT TYPE 1. CONNECT TO BRIDGE RAILING SYSTEM.  
 RT. STA. 110+53.89 CONSTRUCT 75 LF GUARDRAIL - STEEL W BEAM - S FACE. CONNECT TO EXISTING GUARDRAIL.  
 RT. STA. 108+74.63 CONSTRUCT 50 LF GUARDRAIL - STEEL W BEAM - S FACE WITH 1-GUARDRAIL END TREATMENT TYPE 1. CONNECT TO BRIDGE RAIL SYSTEM.  
 RT. STA. 110+53.89 CONSTRUCT 75 LF GUARDRAIL - STEEL W BEAM - S FACE. CONNECT TO BRIDGE RAILING SYSTEM. CONNECT TO EXISTING GUARDRAIL.

PI STA 106+23.85  
 Δ = 65°47'03" LT  
 T = 523.85'  
 L = 930.00'  
 R = 810.00'  
 E = 154.64'



**COORDINATE CONTROL POINTS**

POINT	DESCRIPTION	State Plane Coordinates		STATION	OFFSET
		NORTH (Y)	EAST (X)		
CP 1	5/8" Rebar & Cap	3674845.8440	4312909.4300	362.02	-
CP 2	5/8" Rebar & Cap	3674841.0450	4312633.3070	358.98	111+88.44
CP 4	5/8" Rebar & Cap	3674913.3400	4312118.9700	359.17	-

**BASIS OF ELEVATIONS**

Source KYTC, USGS The National Map; National Boundaries Dataset, 3DEP Elevation Program, Geographic Names Information System, National Hydrography Dataset, National Land Cover Database, National Structures Dataset, and National Transportation Dataset; USGS Global Ecosystems; U.S. Census Bureau TIGER/Line data; USFS Road Data; Natural Earth Data; U.S. Department of State Humanitarian Information Unit; and NOAA National Centers for Environmental Information, U.S. Coastal Relief Model. Data refreshed June, 2022.

**COORDINATE SYSTEM**

Coordinates for horizontal control were obtained by redundant GPS observations using Spectra SP80 GNSS receivers on the NAD83 Kentucky State Plane Coordinate System, KY Single Zone, US Survey Feet utilizing the KYCORS RTN GPS Network on December 10, 2019. Coordinates shown are State Plane Coordinates, US Survey Feet. No project datum factor was calculated or used for this project.

**RIGHT OF WAY SUMMARY**

PARCEL NO.	OWNER(S)	TOTAL AREA OF TRACT		PERMANENT RW ACQUIRED		EASEMENTS REMAINING		SOURCE OF TITLE
		ACRES	SQ. FT.	ACRES	SQ. FT.	ACRES	SQ. FT.	
100	ANDREW GLAZEBROOK & SARAH GLAZEBROOK	78.750	-	-	2005.625	-	78.704	DB 245 PG 259

**CENTERLINE DATA**

POINT	State Plane Coordinates		STATION
	NORTH (Y)	EAST (X)	
POB	3675379.9333	4311689.5863	100+00.00
PC	3675289.1554	4311731.5313	101+00.00
PI	3674813.6134	4311951.2612	106+23.85
PT	3674818.9520	4312475.0866	110+30.00
END	3674823.2322	4312895.0648	114+50.00

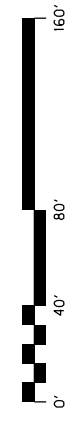
**RIGHT OF WAY MONUMENTS**

POINT	DESCRIPTION	State Plane Coordinates		STATION	OFFSET
		NORTH (Y)	EAST (X)		
1	R/W Monument Type 1	3674788.4218	4312379.6236	109+38.00	35.00 RT.
2	R/W Monument Type 1	3674767.3008	4312390.3153	109+50.00	55.00 RT.
3	R/W Monument Type 1	3674765.1339	4312493.2156	110+47.58	54.00 RT.



COMMONWEALTH OF KENTUCKY  
 DEPARTMENT OF HIGHWAYS

DRAWING TITLE: KY 120 OVER SLOUGH OF TRADEWATER RIVER



STA 108+27.00 TO 112+07.15

ITEM NO. 01-10108.00  
 COUNTY OF CRITTENDEN  
 SHEET NO. R4